

Gemalto EHS5 based miniPCle wireless card



Gemalto EHS5 based miniPCle is an easy to integrate data modem designed to add cost efficient 3G wireless connectivity to industrial systems.

miniPCle card is available in 3 variants:

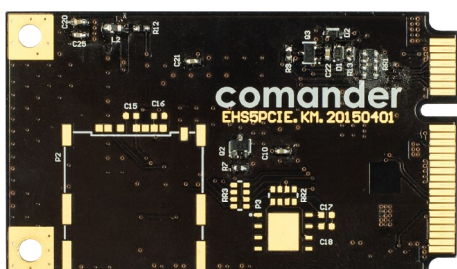
- simple miniPCle card
- with onboard Gemalto MIM
- with Micro - SIM card reader

GENERAL FEATURES

- 3GPP Rel.7 Compliant Protocol Stack
- EHS5-E: Dual-Band UMTS (WCDMA/FDD) 900 and 2100 MHz; Dual-Band GSM 900 and 1800 MHz
- Internet Services TCP/UDP server/client, Ping, FTP client, HTTP client
- Control via AT commands (Hayes, TS 27.007, TS 27.005)
- Java™ ME 3.2
- Secure data transmission with HTTPS/SSL
- 10 MB R AM and 10 MB Flash File System
- Supply voltage range 3.1 - 4.5 V, highly optimized for minimal power consumption
- Dimension: 27.6 x 18.8 x 2.3 mm
- Operating Temperature Range: -40 °C to + 85°C
- RoHS and REACH compliant, EuP support

INTERFACES

- PCI Express® Mini Card system connector
 - > Supply voltage 3.3 V
 - > USB 2.0 HS interface up to 480 Mbps
 - > UICC/SIM card interface 1.8 V / 3.0 V
 - > Reset
- Antenna connector: U.FL 50 Ω



SPECIFICATIONS

- HSDPA Cat.8 / HSUPA Cat.6 data rates
 - DL: max. 7.2 Mbps, UL: max. 5.76 Mbps
- EDGE Class 12 data rates
 - DL: max. 237 kbps, UL: max. 237 kbps
- GPRS Class 12 data rates
 - DL: max. 85.6 kbps, UL: max. 85.6 kbps
- SMS text and PDU mode, cell broadcast

SPECIAL FEATURES

- USB interface supports multiple composite modes and a Linux-/Mac- compliant mode
- Firmware update via USB and serial interface
- BIP (Bearer Independent Protocol)
- Compliant with Gemalto PHS8 module
- Real time clock with alarm functionality
- Multiplexer according 3GPP TS 27.010
- RLS Monitoring (Jamming detection) in 2G and 3G