



WLAN/BLUETOOTH ANTENNA

Antenna 0 dBi build MCX 150mm

AW-A24G-2M150

SECTRON company offers a wide portfolio of WLAN/Bluetooth antennas with various versions differing in shape, level of gain and manner of attachment. SECTRON guarantees a compatible connection between an antenna and all antenna adaptors produced by SECTRON.

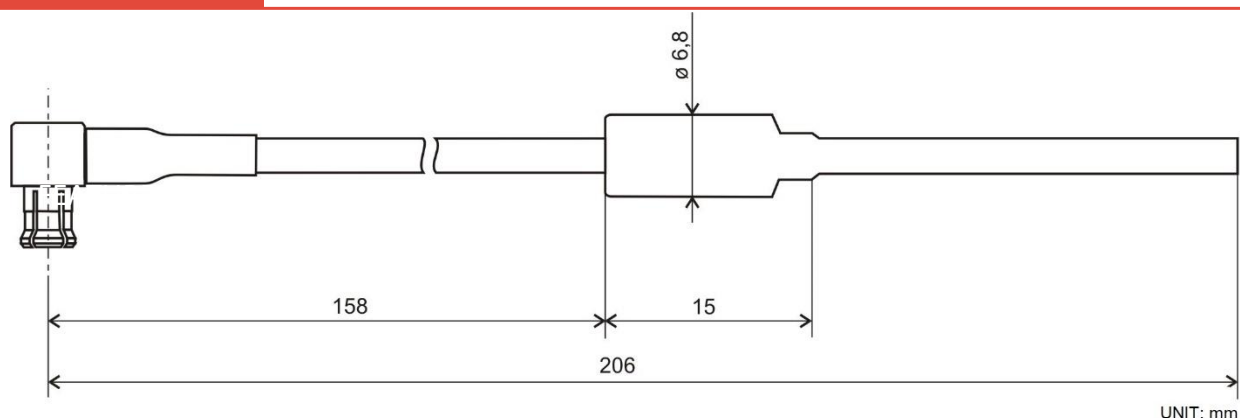


BENEFITS

- Low VSWR
- Optimized high frequency gain
- Minimalistic dimension

Technology	WLAN/Bluetooth
Frequency bands	2.4 GHz
Bandwidth	-
Gain	0 dBi
VSWR	<1.2:1
Impedance	50 Ohm
Directivity	Omnidirectional
Beam angle	H 360° V 30°
Polarization	Linear
Maximum input power	1 W
Power voltage	-
Dimensions	48 x Ø 6.8 mm
Weight	5.67 g
Operating temperature	-30 to +90 °C
Execution	External
Method of attachment	-
Cable type	Hirose 088
The cable length	158 mm
Connector type	MCX(m) 90°

DRAWING



VARIANTS

Different connector variants or cable lengths are available on request.

CONTACTS

SECTRON s.r.o. Josefa Šavla 1271/12
709 00 Ostrava 9, Czech Republic

WWW.SECTRON.CZ
Tel.: +420 556 621 021