

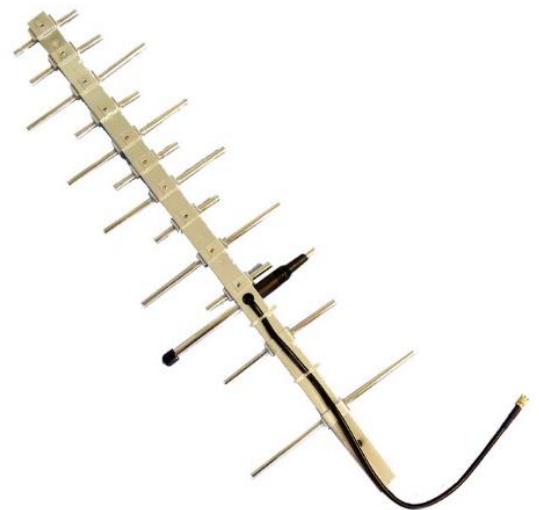


## GSM/UMTS/LTE ANTENNA

Antenna LTE YAGI 140, 14 dBi,  
SMA(m), RG58/28cm

### AO-ALTE-YASS

SECTRON company offers a wide portfolio of GSM/UMTS/LTE antennas with various versions differing in shape, level of gain and manner of attachment. SECTRON guarantees a compatible connection between an antenna and all antenna adaptors produced by SECTRON.

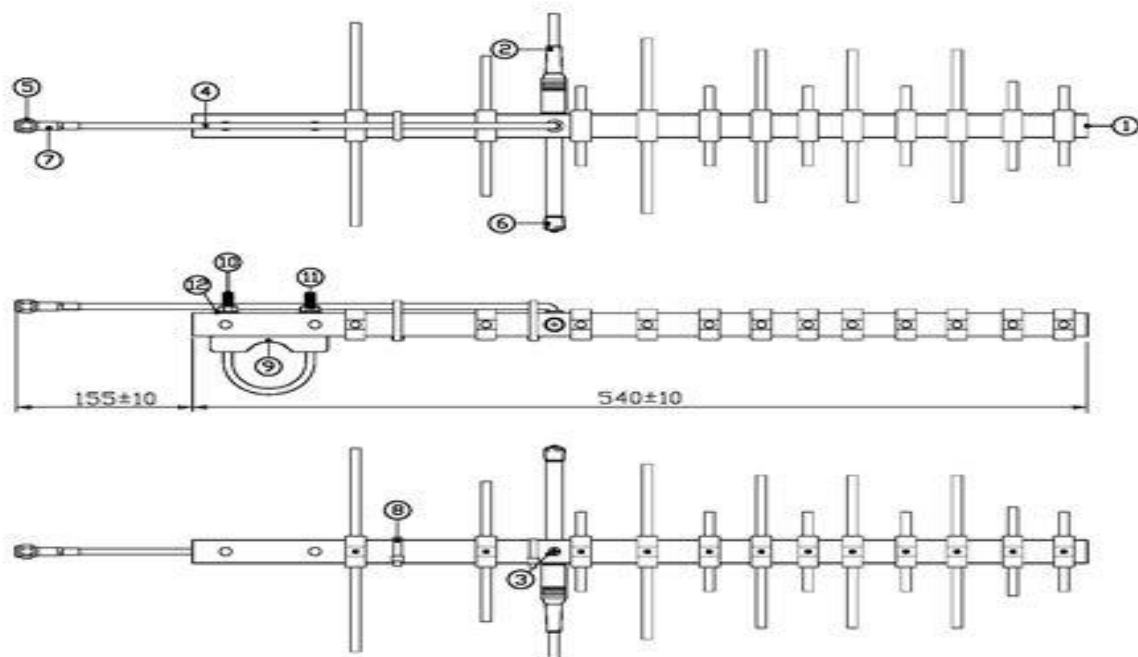


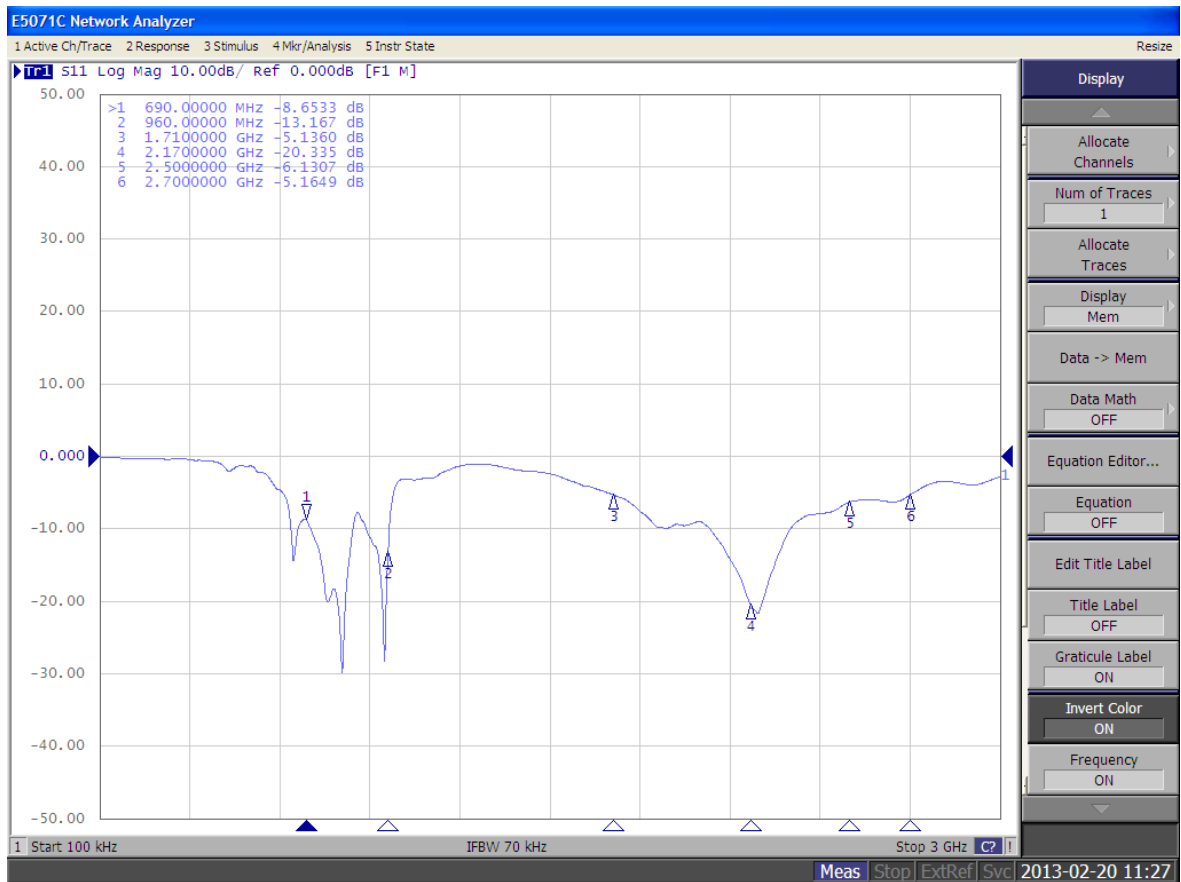
#### BENEFITS

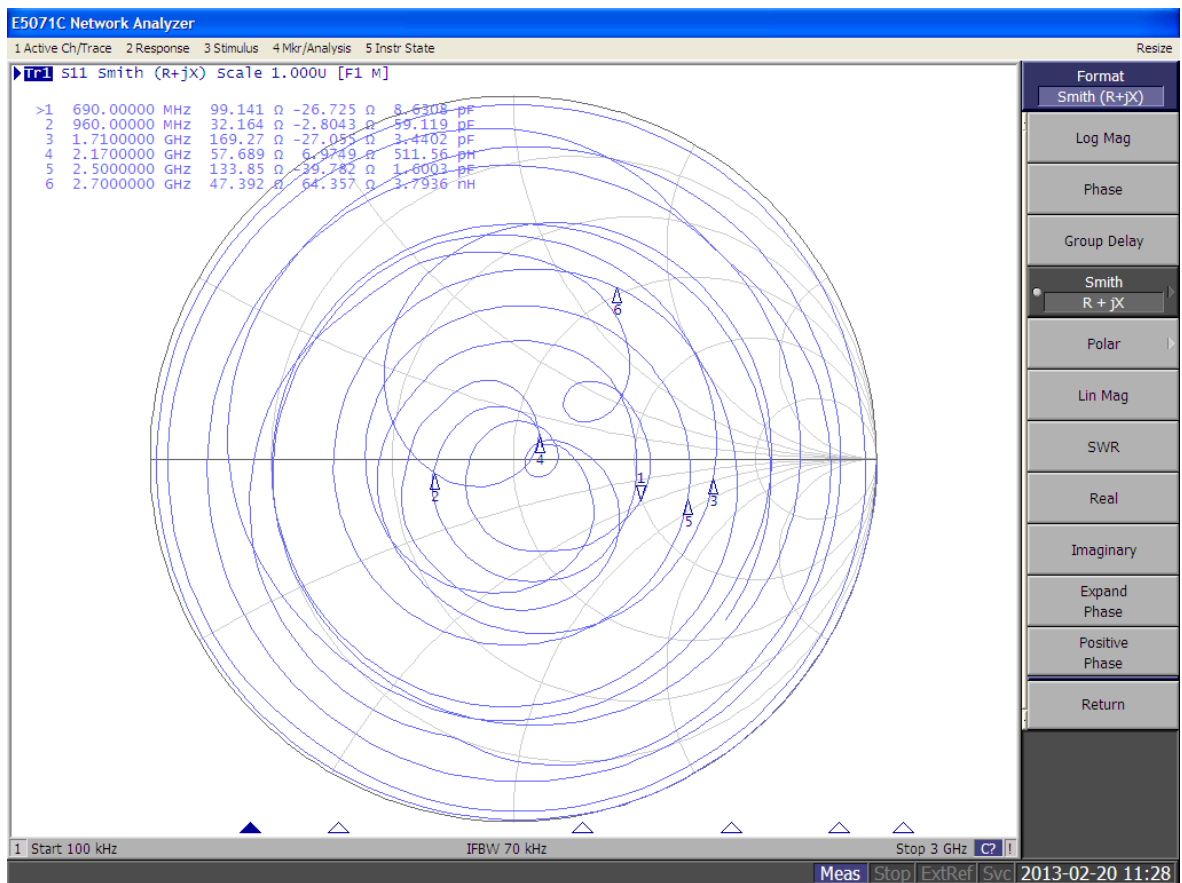
- High frequency range
- High Gain
- Directional - greater reach

Technology	GSM/UMTS/LTE
Frequency bands	700/800/900/1700/1800/1900/2100/2500/2600/2700 MHz
Bandwidth	-
Gain	14 dBi
VSWR	<3.5:1
Impedance	50 Ohm
Directivity	Directional
Beam angle	H 30° V 30°
Polarization	Vertical
Maximum input power	10 W
Power voltage	-
Dimensions	540 x 180 x 26.6 mm
Weight	569 g
Operating temperature	-30 to +60 °C
Execution	External
Method of attachment	Mounting
Cable type	RG58/U
The cable length	280 mm
Connector type	SMA(m)

DRAWING







VARIANT	PART NUMBER

## CONTACTS

SECTRON s.r.o. Josefa Šavla 1271/12  
709 00 Ostrava 9, Czech Republic

WWW.SECTRON.CZ  
Tel.: +420 556 621 021