



## GSM/UMTS/LTE ANTENNA

Antenna LTE OMNI OM58,  
690-2600 MHz, 5 dBi, SMA(m),  
Cable .195/3m

### AO-ALTE-OM58

SECTRON company offers a wide portfolio of GSM/ UMTS/LTE antennas with various versions differing in shape, level of gain and manner of attachment. SECTRON guarantees a compatible connection between an antenna and all antenna adaptors produced by SECTRON.

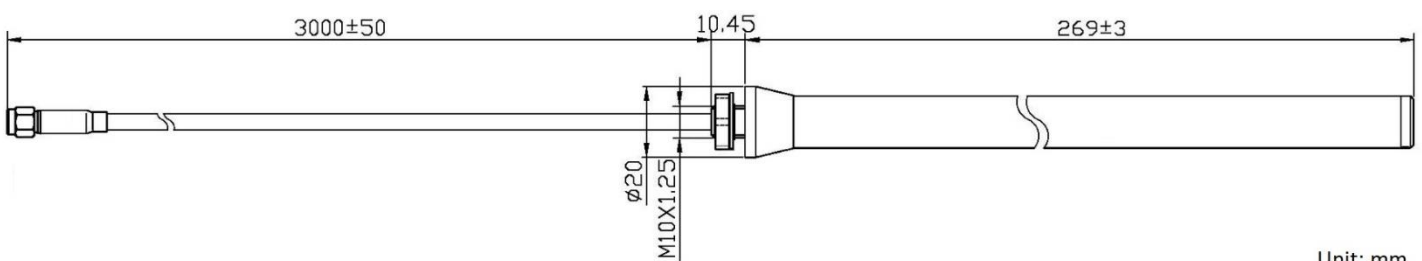
#### BENEFITS

- Easy installation
- High frequency range
- Low VSWR
- IP67

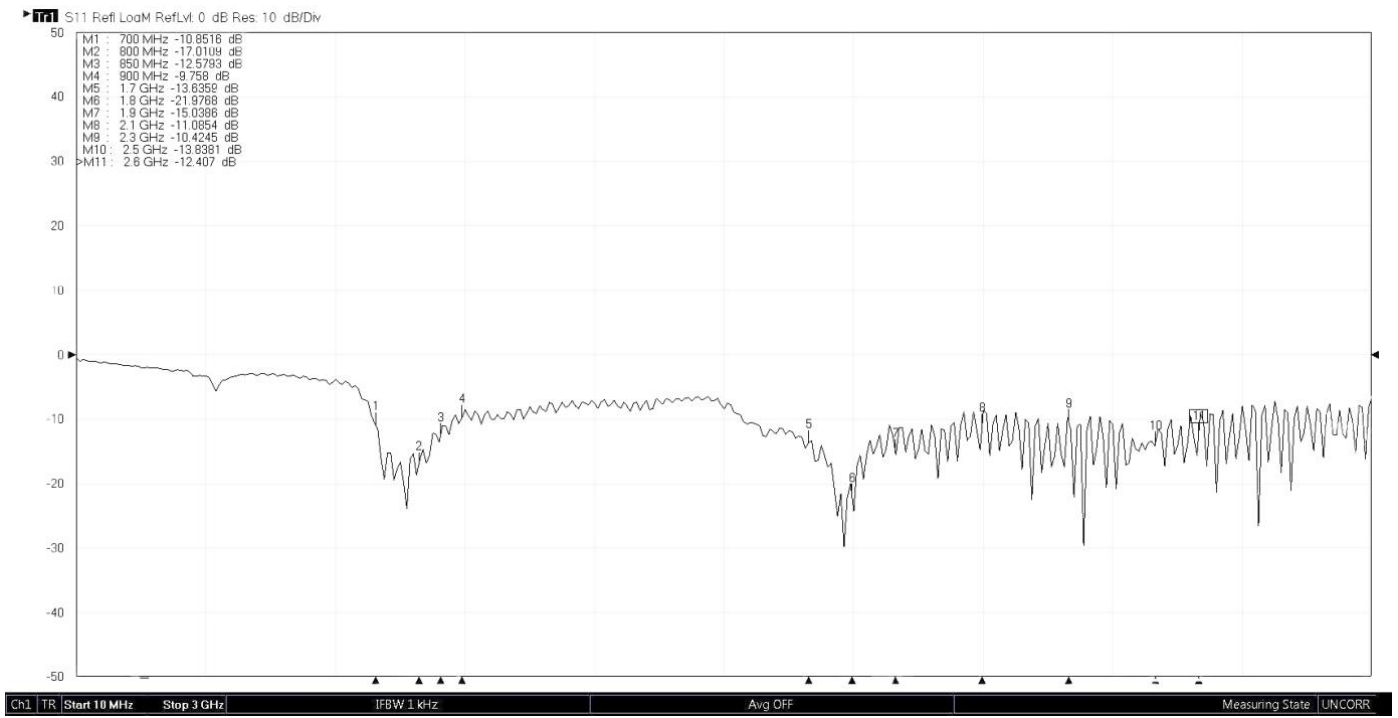


Technology	GSM/UMTS/LTE
Frequency bands	700/800/850/900/1700/1800/1900/2100/2300/2500/2600 MHz
Bandwidth	-
Gain	5 dBi
VSWR	<1.9:1
Impedance	50 Ohm
Directivity	Omnidirectional
Beam angle	Attached graphs below
Polarization	Linear
Maximum input power	50 W
Power voltage	-
Dimensions	279.45 x $\varnothing$ 20 mm
Weight	750 g
Operating temperature	-40 to +60 °C
Execution	External
Method of attachment	Mounting
Cable type	.195
The cable length	3 m
Connector type	SMA(m)
IP code	IP67
Certification	RoHS

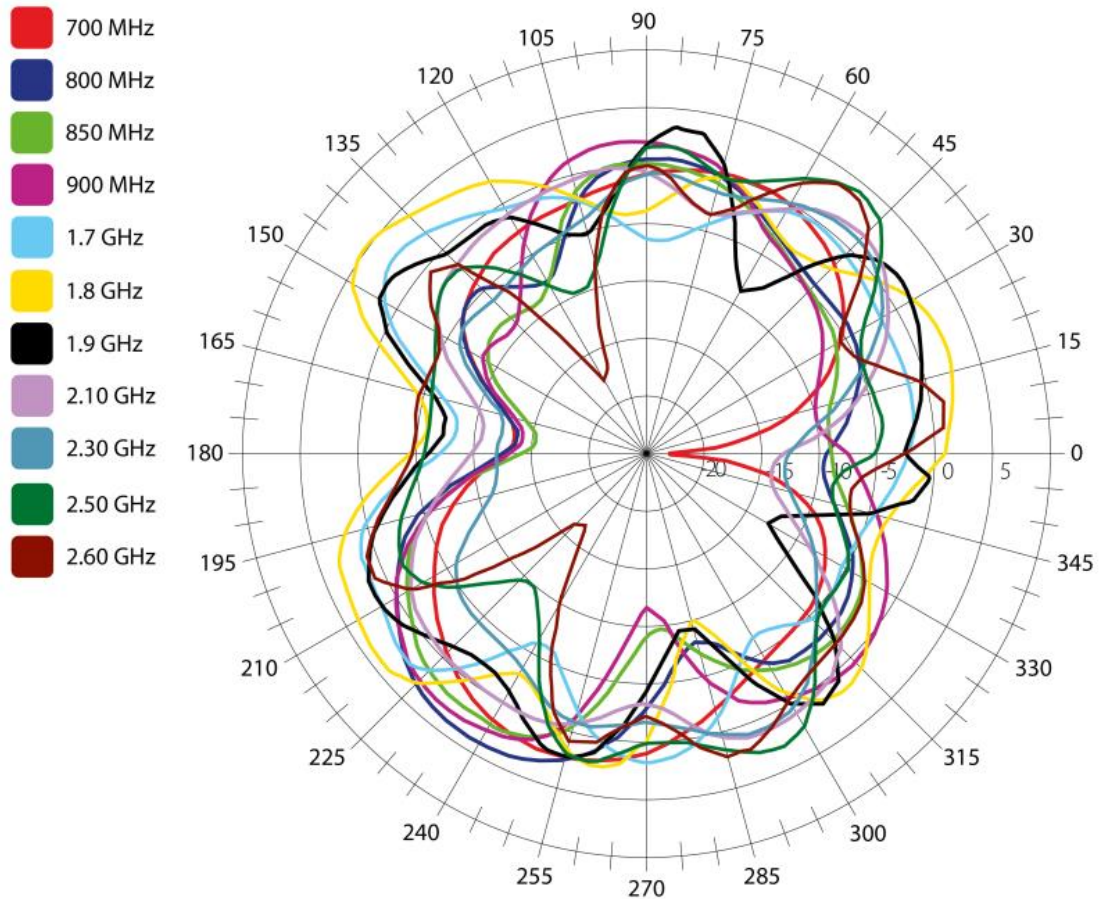
## DRAWING



### S<sub>11</sub> [dB] – Return loss



### SIMULATED GRAPHS



Different connector variants or cable lengths are available on request.

**CONTACTS**

---

SECTRON s.r.o. Josefa Šavla 1271/12  
709 00 Ostrava 9, Czech Republic

WWW.SECTRON.CZ  
Tel.: +420 556 621 020